

Stucco Évolution

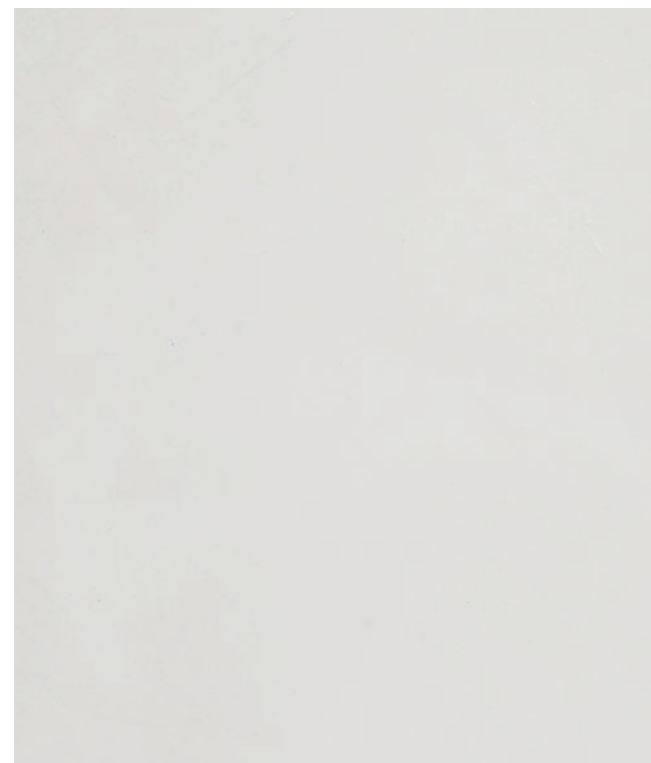


Peintures, vernis et produits connexes
NF 130
www.ecolabels.fr

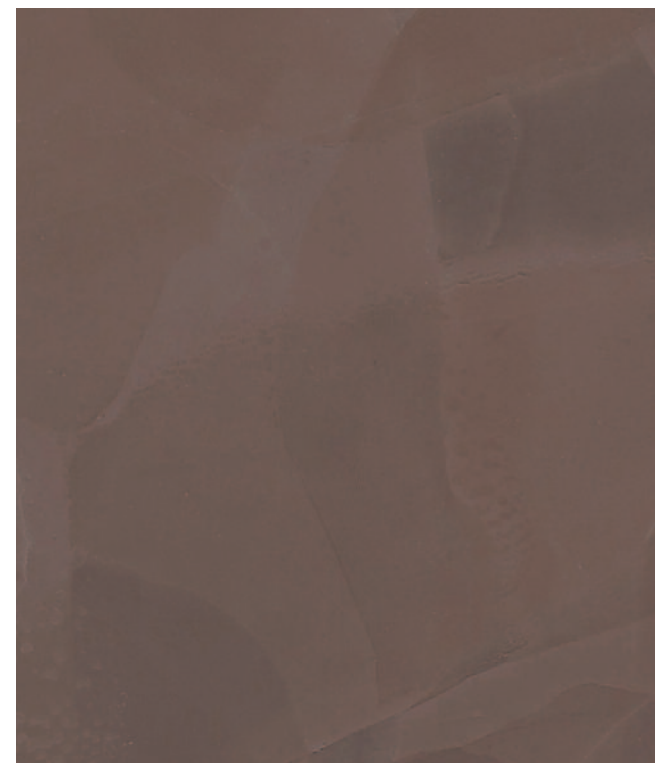
Stucco Évolution



STU01 (T)



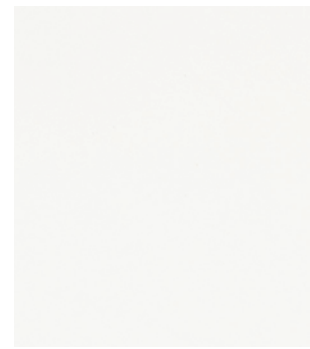
STU35



STU34 (T)



STU02 (T)



STU06



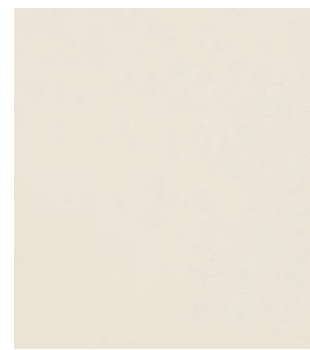
STU10



STU14 (T)



STU03 (T)



STU07



STU11



STU15 (T)



STU04 (T)



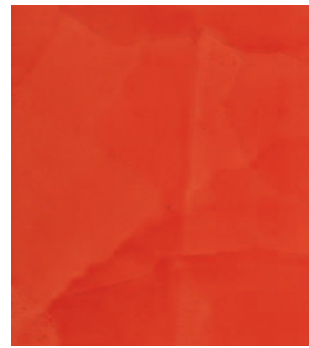
STU08



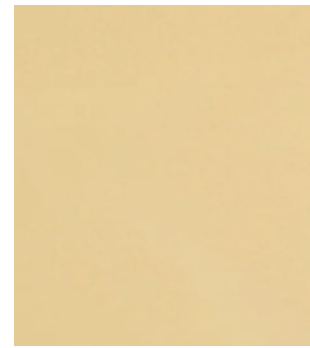
STU12



STU16 (T)



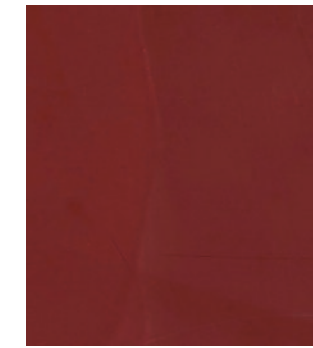
STU05 (T)



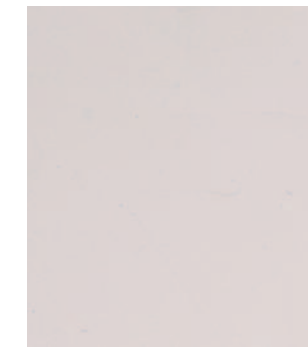
STU09



STU13



STU17 (T)



STU18



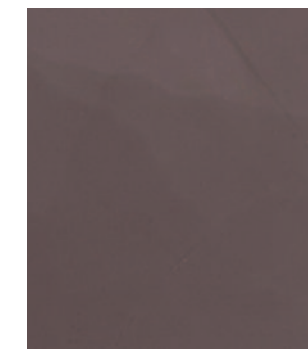
STU22



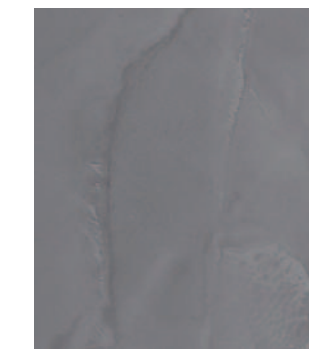
STU26



STU30 (T)



STU19



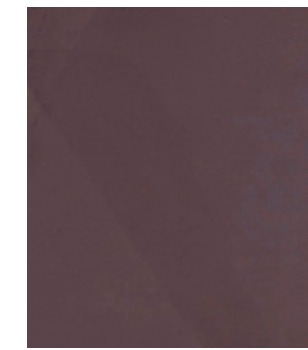
STU23



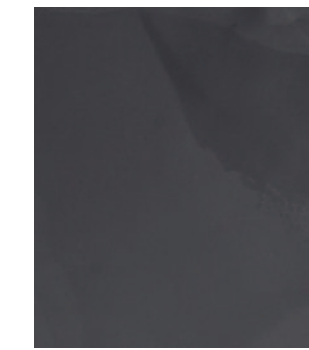
STU27



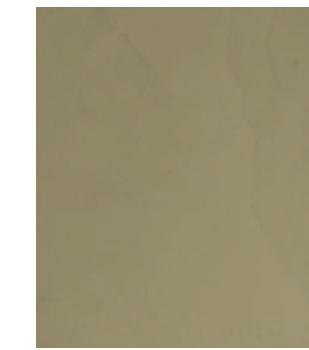
STU31 (T)



STU20 (T)



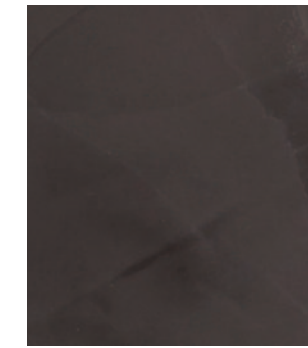
STU24



STU28 (T)



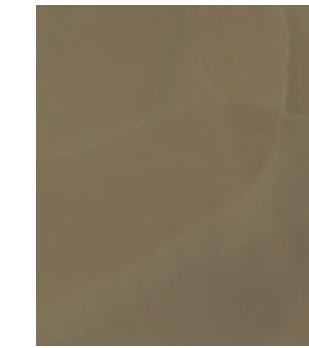
STU32 (T)



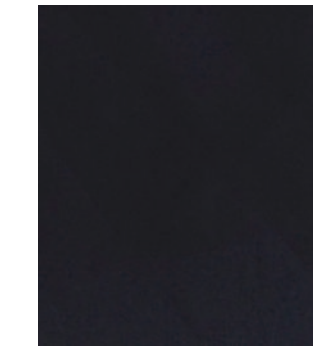
STU21 (T)



STU25 (T)



STU29 (T)



STU33 (T)

Stucco Évolution





Seigneurie a choisi

ABSOLU
SYSTEM[®]

la technologie couleur
haute définition, pour
la mise à la teinte
de ses produits décoratifs.

Système :

- Impression adaptée au support
- 2 couches de STUCCO sous forme de passes d'enduisage
- Ponçage entre chaque couche
- 2 à 3 couches successives de STUCCO par pastillage
- Ferrage pour obtenir l'aspect définitif

Conditionnement : 5 kg

Pour tous renseignements complémentaires ou pour la mise en œuvre,
se reporter à la fiche technique correspondante.


www.seigneurie.com

Immeuble Les Fontaines - 10, rue Henri-Sainte-Claire-Deville
92565 Rueil-Malmaison cedex
Tél. : 01 57 61 00 00 - Fax : 01 57 61 06 10